



Product Introduction:

| Active Ingredient | Content & Formulation |
|--------------------------------|-----------------------|
| Abamectin 2% + Fosthiazate 13% | 15%GR |

Product Feature:

This product is a nematicide with formulation of Abamectin and Fosthiazate. It has killing and systemic conductivity, which acts on the nervous system of pests to kill nematode larvae at the root of crops and prevent invasion of nematodes to their roots. It is one of the few nematicides for vegetables which has currently registration in China, and especially suitable for the production of pollution-free vegetables.



Advantage:

This product is a non-fumigation type, high-efficiency, low-toxicity, low-residue and environmental-friendly nematicide. It is a systemic conduction-based nematicide.

1. Significantly effective, it directly kills root-knot nematodes, with a control efficacy of higher than 90%;
2. Long duration, up to two or three months;
3. Quick effect - Within 24 hours after application, it can be observed under the microscope that almost all of the nematodes are killed. The color change of crop nodules can be observed in 4-6 days, the length of fibrous roots can be significantly increased in 6-8 days, and the recovery of crop growth can be observed in 15 days.
4. It can be flexibly and conveniently used in each growth stage of crops. It can protect crop roots before crop damage by root-knot nematodes. The crops can be root-irrigated to directly kill root-knot nematodes inside root nodules after crop is damaged by root-knot nematodes.
5. It is safe without damage to seedlings or burning roots;

Applicable Crops:

Crops severely damaged by root-knot nematodes include melons such as loofah, bitter melon, cucumber, and watermelon, solanaceae crops such as pepper, tomato, and eggplant, fruit trees such as banana and citrus, and ginger, potato, etc.



Bitter Gourd

Cucumber

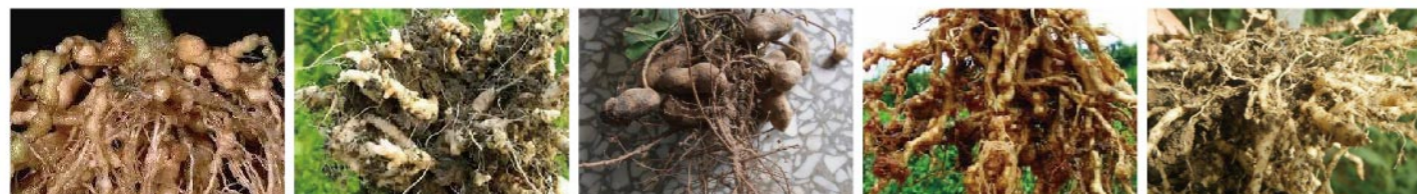
Watermelon

Ginger

Potato

Targets:

Root-knot nematodes



Tomato meloidogyne

Chinese cabbage meloidogyne

Peanut meloidogyne

Ginger meloidogyne

Water amaranth grass

Uses and Recommendations:

| Crops | Targets | Dosage | Application Directions |
|----------|---------------------|------------------|------------------------|
| Cucumber | Root-knot nematodes | 15000-18000 g/ha | Spray |

1. Apply before cucumber is transplanted, applying on the soil before transplanting. To ensure the efficacy, large pieces of soil should be broken before application, and cucumber should be transplanted on the same day of application.
2. Apply the product to make it mixed with soil thoroughly, or apply on the surface of soil and furrow. Spread the medicine evenly on the soil surface, and then use the rotary tiller or hand tools to mix the medicine and the soil thoroughly. The depth of soil mixed with the medicine should be 15-20 cm.
3. Do not apply on windy days or when rainfall is expected within one hour.

Cautions:

1. Maximum times of applications per season is one time.
2. Do not apply this product mixed with strong acidic and strong alkaline substances.
3. This product is toxic to bees, birds, fish and daphnia and is prohibited to be used in beekeeping sites and nectar crops during their flowering.
4. Wear protective clothing and gloves when using this product to avoid inhalation. Do not eat or drink during application. Please wash hands and face after application.

